

ГЪВКАВОСТ НА ИЗПЪЛНИТЕЛНИТЕ ЗАЛИ

Концепцията на дизайна се фокусира върху изпълнението на програмните критерии за основната зала, определени в проектното задание, като едновременно с това изследва иновативни начини за осигуряване на гъвкавост. Централен аспект на този подход е внедряването на организация на изпълнителната зала като “кутия в кутия”. Този дизайн позволява околните пространства да се приспособят към изискванията за гъвкаво пространство, като същевременно служи и за звуков буфер, ограничаващ трансфера на шум към и от съседните сгради.

Около основната зала се намират различни трансформиращи се пространства, включително помещение за контрол на звук и осветление, зона-предверие, чакащи артисти и склад към залата. Тези зони могат да бъдат интегрирани, в зависимост от конкретните програмни изисквания. Основната изпълнителна зала е проектирана с възможност за различни конфигурации, от традиционно разположение с крайна сцена до алея, отворена сцена и арена. Залата може също така да поеме камерен оркестър, филмови прожекции, изложби и частни събития, които могат да донесат приходи за институцията. Трансформиращите се елементи в залата позволяват регулиране на акустиката, обема, интимността и позициите на осветлението/говорителите, като се осигурява разнообразие от тихи или драматични преживявания, като се спазва предвидените размери от 12м на 22м и височина 8м, според проектното задание.

Зона-предверие, разположена на юг от основната зала, служи като “горно фоайе” и може да функционира като вестибюл или да се приобщи към самата изпълнителна зала с помощта на големи плъзгащи се акустични врати. Проектът включва различни подвижни елементи, включително издърпващи се балкони, движеща се плоскост на тавана, подвижна горна сценична механизация и плъзгащи се преградни стени. Всички тези елементи са успешно използвани в други театрални сгради. Ако нашият екип бъде избран за проекта, ще сътрудничим внимателно с Клиента, за да определим кои от тези елементи най-добре отговарят на специфичните програмни нужди, бюджет и предоставят най-голяма стойност.

Важна характеристика на проекта е разположението и програмирането на репетиционната зала в сърцето на сградата. Нашето предложение предвижда репетиционната зала като неформално изпълнително пространство, разположено на партерния етаж, което може да се използва заедно с открития летен театър. Залата за репетиции е оградена със стъкло, което позволява на публиката да наблюдава дейностите вътре. Прибиращите се завеси могат да се използват за осигуряване на уединение или контрол на количеството светлина, навлизащо в пространството. Репетиционната зала е предназначена да бъде многофункционална стая, способна да поеме репетиционните нужди на изпълнителите, като същевременно се трансформира в обществена стая, лекционна зала, изложбено пространство или друга зона за представления, която се отваря към външния двор и външния театър.

PERFORMANCE SPACE FLEXIBILITY

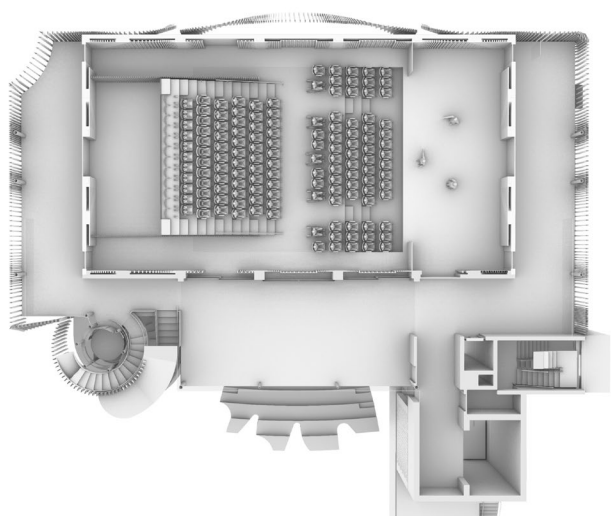
The design concept of the project focuses on meeting the program criteria for the performance hall outlined in the project brief, while also exploring innovative ways to provide flexibility. A central aspect of this approach is the implementation of a “box-in-box” building organization for the performance hall level. This design allows the surrounding spaces to adapt to the requirements of the flexible performance area, while also serving as an acoustic buffer to limit noise transfer to and from the neighboring community.

Surrounding the main performance hall, there are various flexible spaces including a sound and light lock, pre-function area, flexible wings, and hall storage space. These areas can be partitioned as needed, depending on the specific program requirements of the hall. The main performance hall is designed to accommodate a range of performance configurations, from traditional end-stage layouts to alley, thrust, and arena layouts. It can also accommodate a chamber orchestra, film screenings, exhibitions, and private events, which can generate revenue for the facility. The operable components within the hall allow for adjustments to the room acoustics, volume, intimacy, and lighting/speaker positions, enabling a variety of intimate and dramatic experiences in all configurations, while still maintaining the prescribed 12m x 22m, 8m clear volume space mentioned in the project brief.

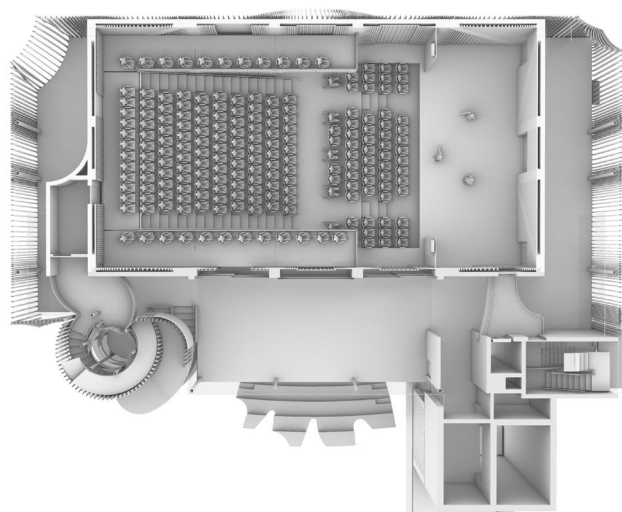
The pre-function space, situated south of the performance hall, serves as an “upper lobby” and has the capability to function as visitor circulation or expand the performance hall through the use of large sliding acoustic doors. The project includes various flexible features, including retractable balconies, a movable ceiling plane, an articulating gantry catwalk, and sliding wall partitions. These features have been successfully utilized in other performance facilities. If our team is chosen for the project, we would collaborate closely with the client to determine which features align best with their specific programming needs, budget, and provide the greatest value.

A significant feature of the project is the placement and programming of the rehearsal hall at the core of the facility. Our design proposal treats the rehearsal hall as a casual performance space situated on the ground floor, which can be used in conjunction with the outdoor theater. The rehearsal hall is enclosed by glass, allowing the public to observe the activities inside. Retractable curtains can be utilized to provide privacy or control the amount of light entering the space. The rehearsal hall is intended to be a versatile room capable of accommodating the rehearsal needs of performers, while also transforming into a community room, lecture hall, exhibition space, or another performance area that opens up to the exterior yard and outdoor theater.

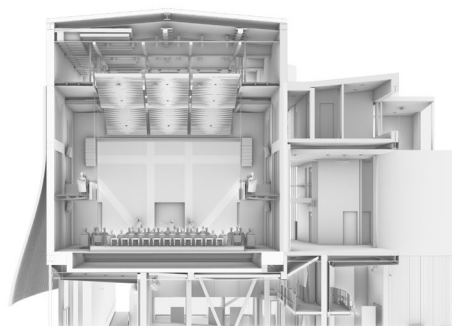
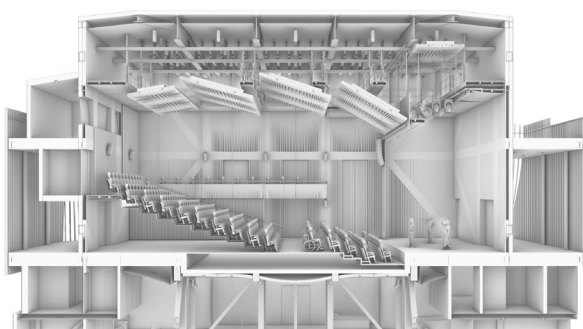
ГЪВКАВОСТ НА ИЗПЪЛНИТЕЛНИТЕ ЗАЛИ
PERFORMANCE HALL FLEXIBILITY



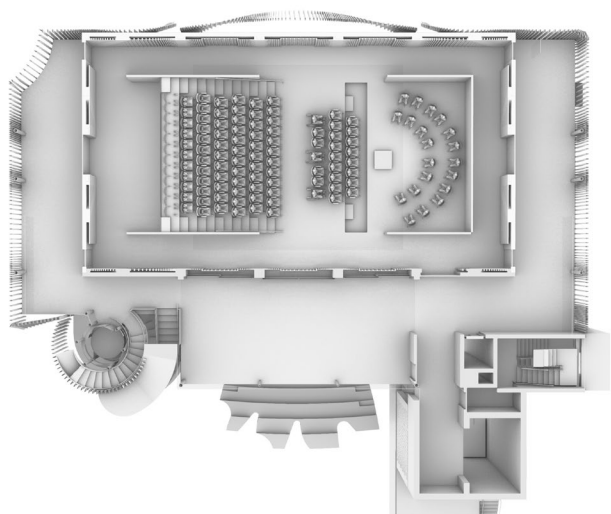
НИВО 1 | LEVEL 1



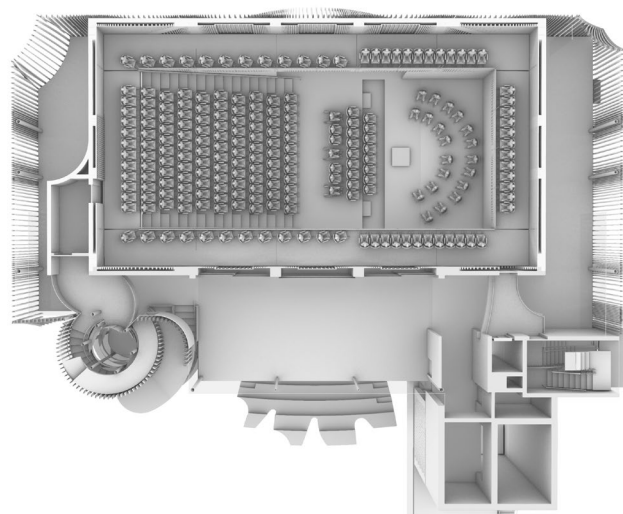
НИВО 1M | LEVEL 1M



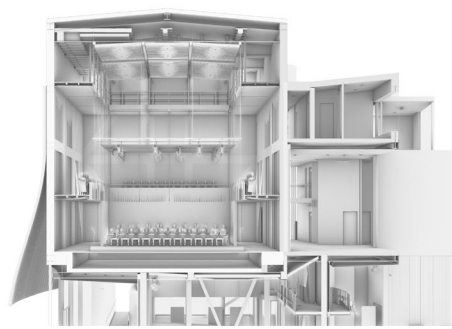
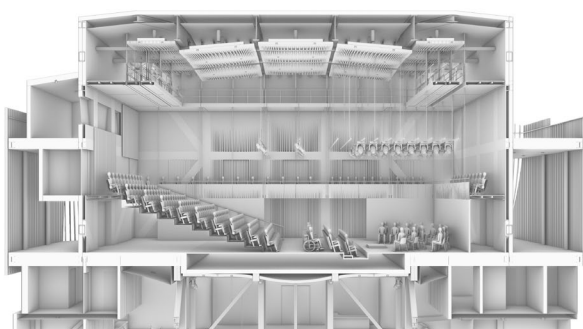
КЛАСИЧЕСКА КОНФИГУРАЦИЯ | END STAGE THEATER



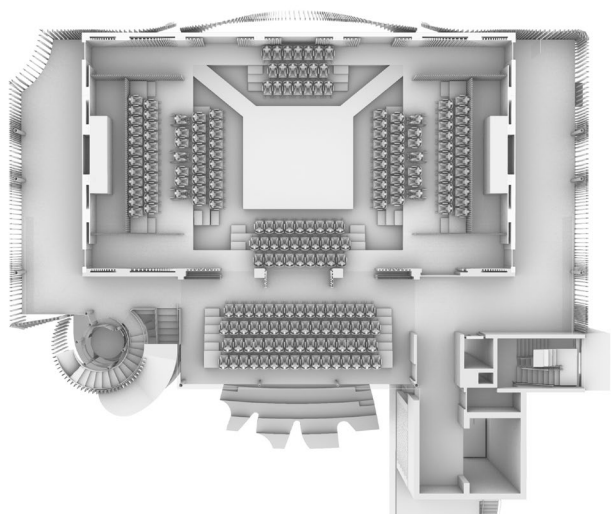
НИВО 1 | LEVEL 1



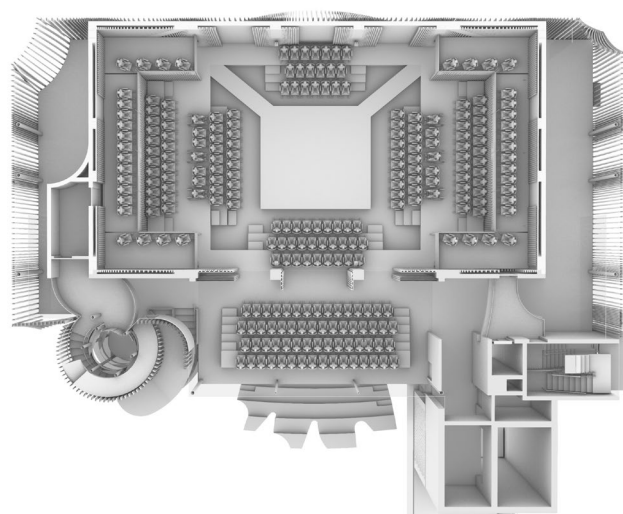
НИВО 1М | LEVEL 1М



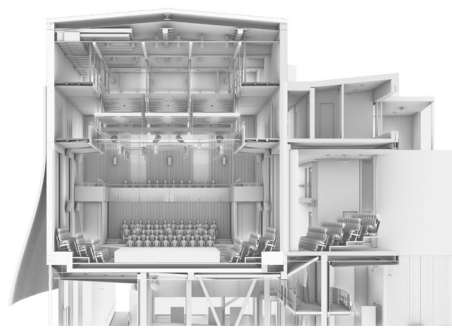
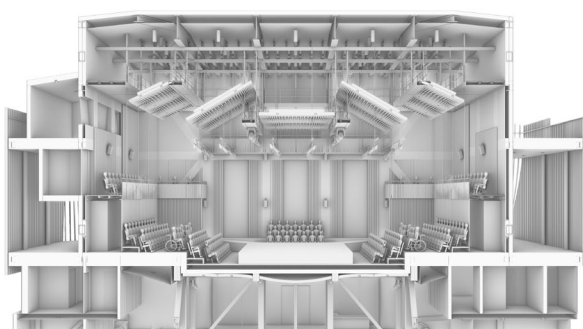
КАМЕРЕН ОРКЕСТЪР | CHAMBER ORCHESTRA



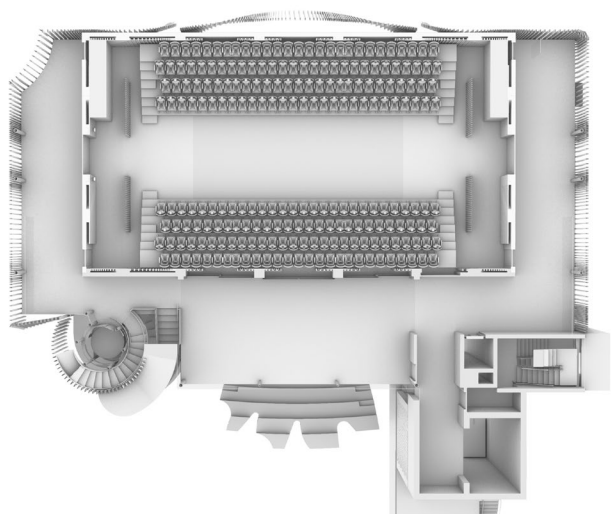
НИВО 1 | LEVEL 1



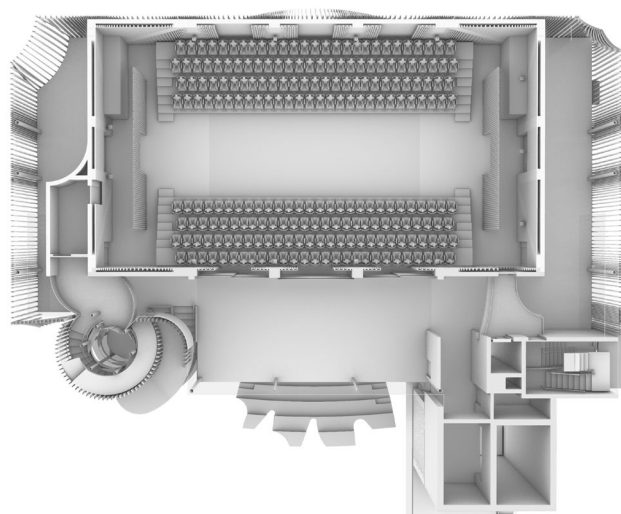
НИВО 1M | LEVEL 1M



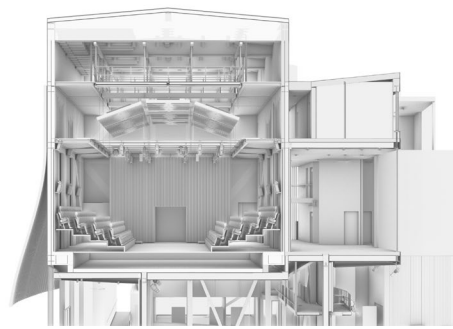
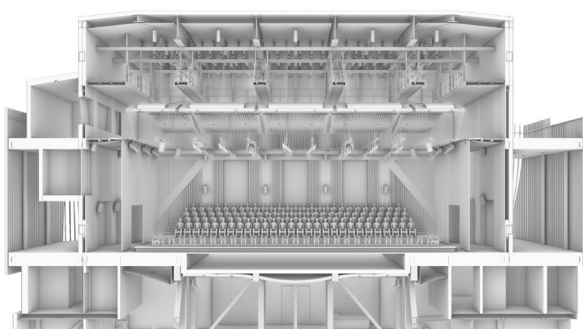
СЦЕНА АРЕНА | ARENA STAGE



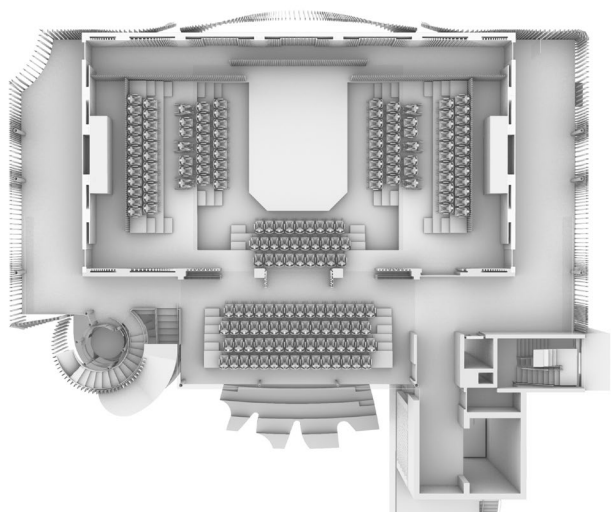
НИВО 1 | LEVEL 1



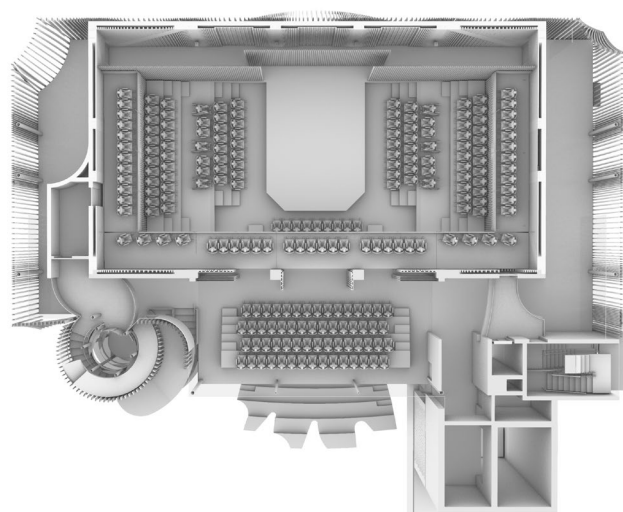
НИВО 1M | LEVEL 1M



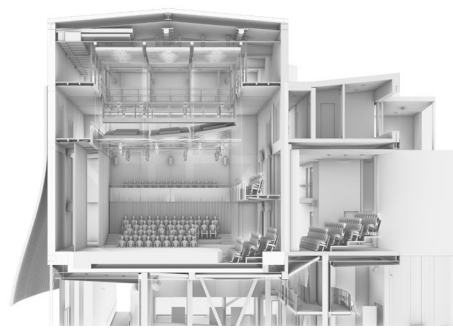
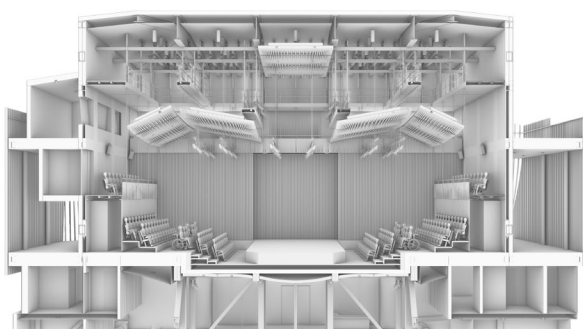
АЛЕЙНА СЦЕНА | ALLEY STAGE



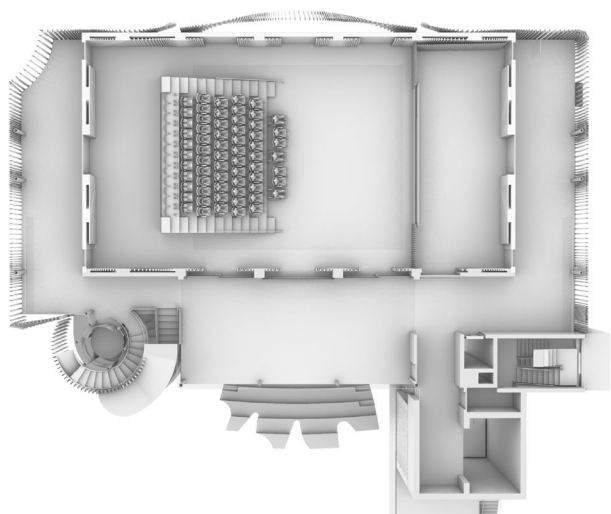
НИВО 1 | LEVEL 1



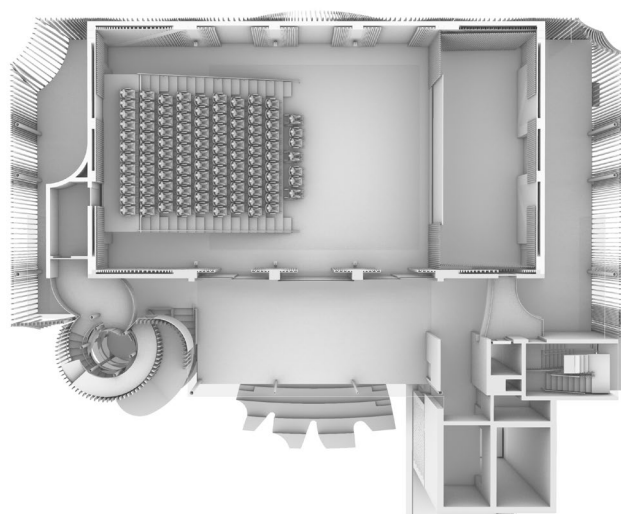
НИВО 1M | LEVEL 1M



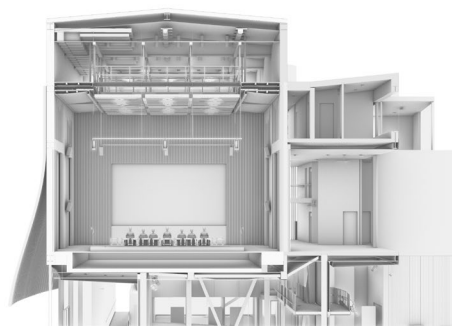
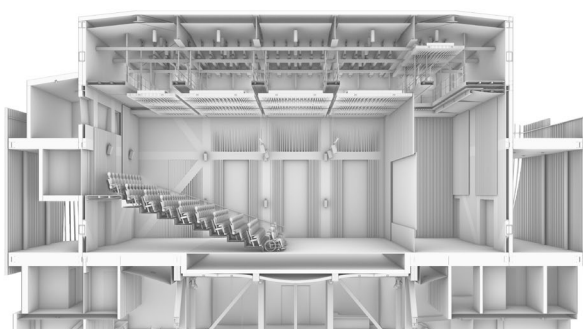
ОТВОРЕНА СЦЕНА | THRUST STAGE

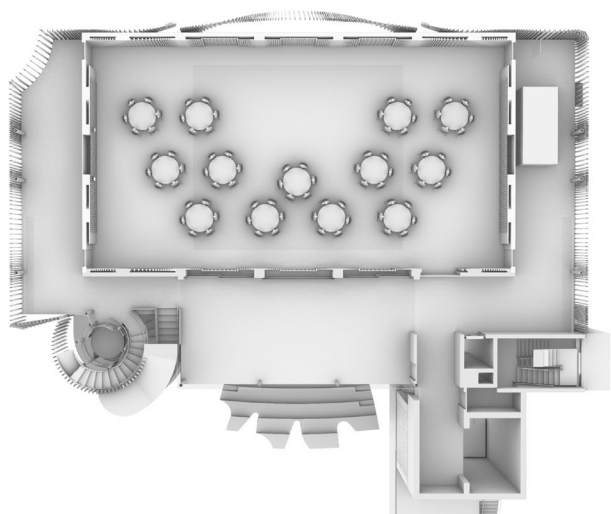
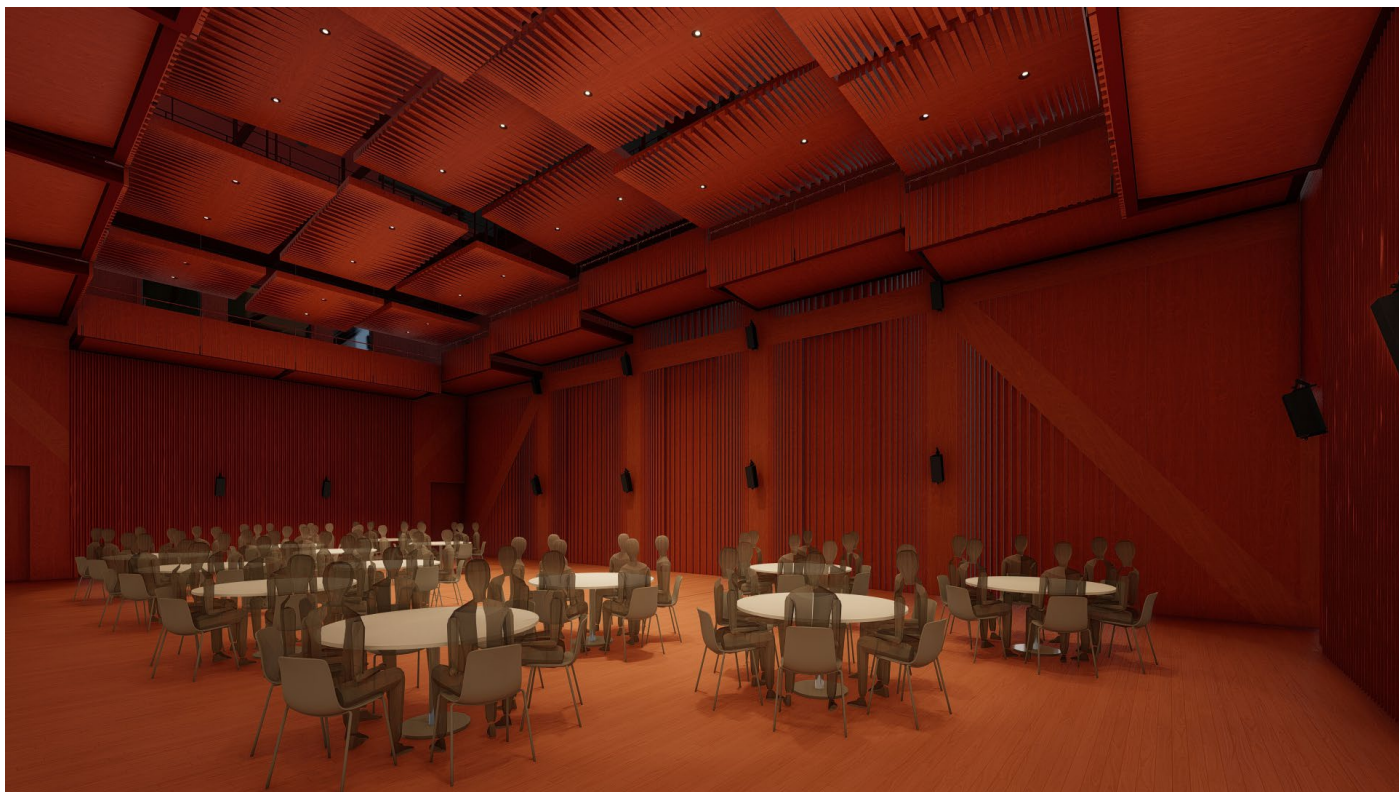


НИВО 1 | LEVEL 1

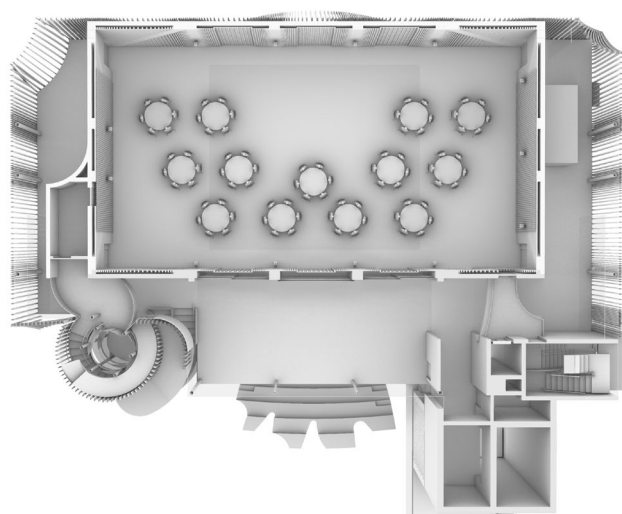


НИВО 1М | LEVEL 1М

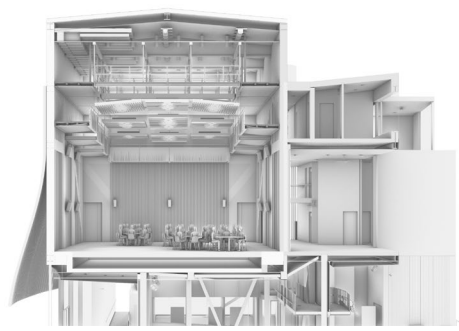
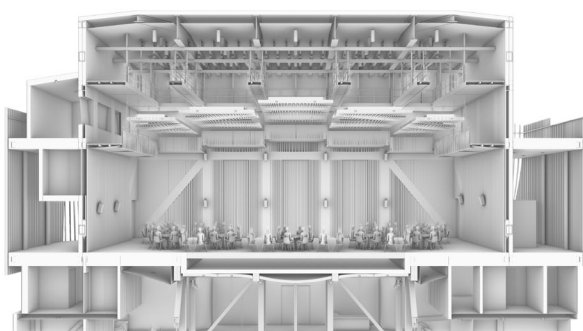




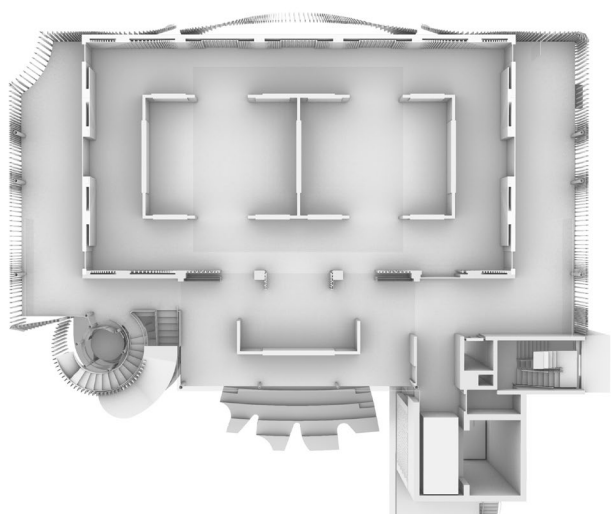
НИВО 1 | LEVEL 1



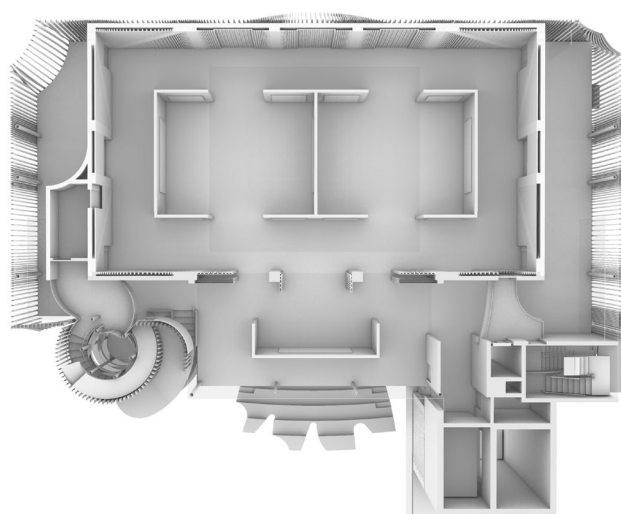
НИВО 1M | LEVEL 1M



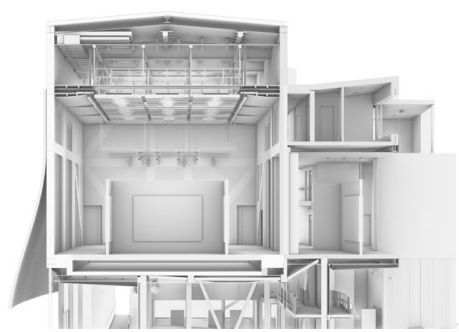
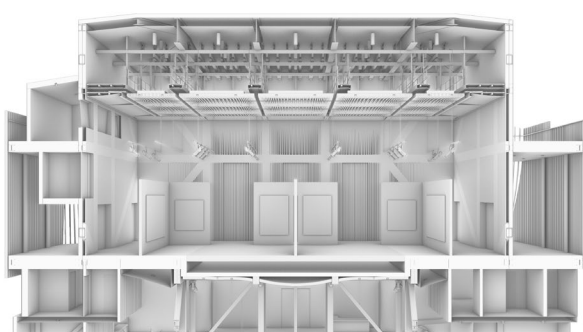
ЗАЛА ЗА СЪБИТИЯ | EVENT HALL



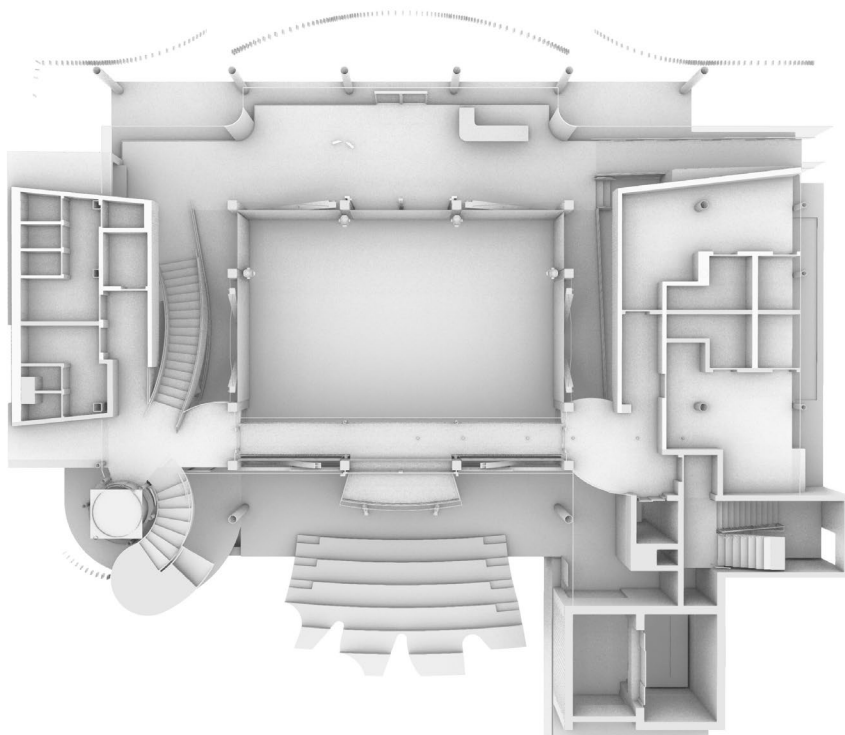
НИВО 1 | LEVEL 1



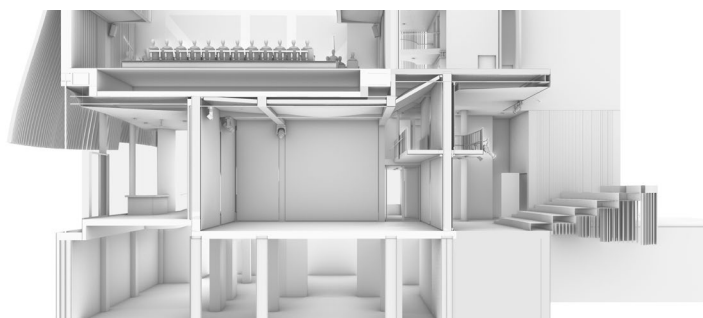
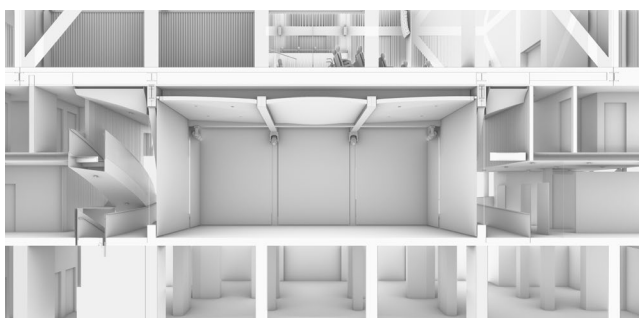
НИВО 1M | LEVEL 1M



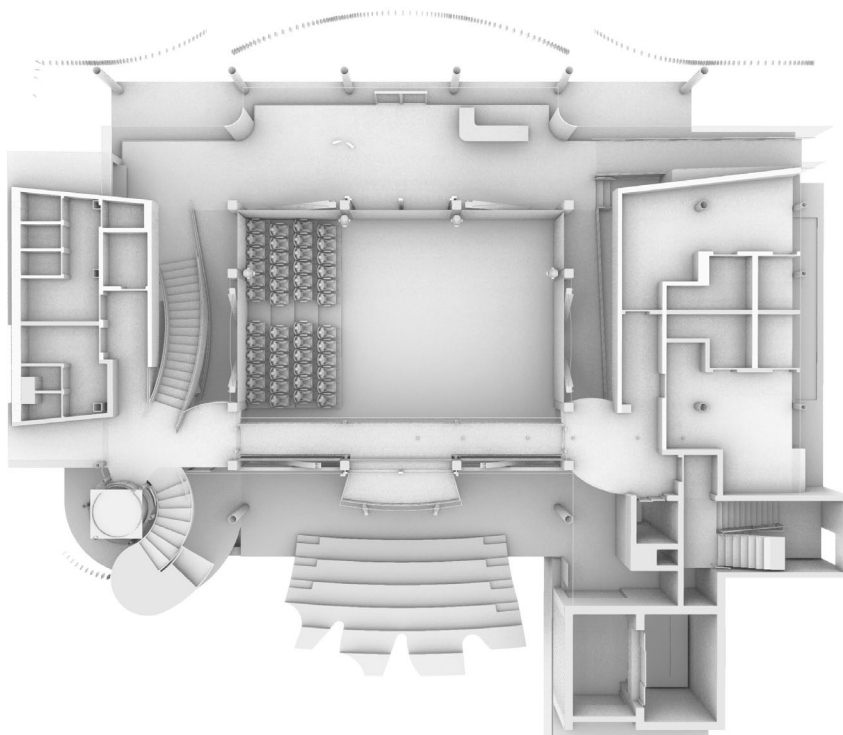
ГЪВКАВОСТ НА РЕПЕТИЦИОННАТА ЗАЛА
REHEARSAL HALL FLEXIBILITY



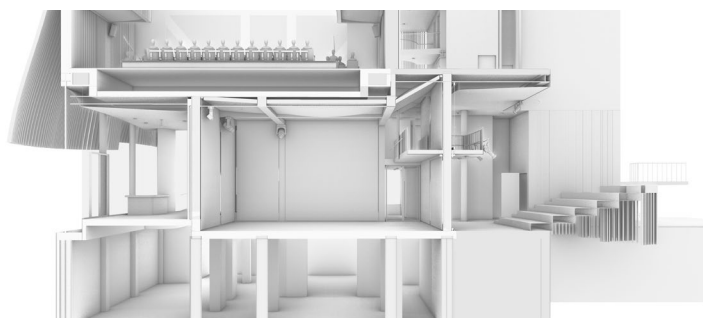
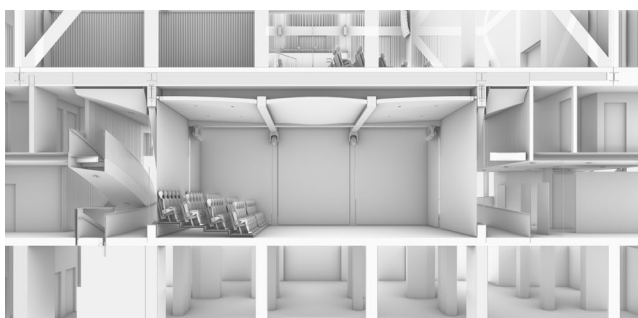
ПАРТЕР КОТА 0 | GROUND LEVEL 0



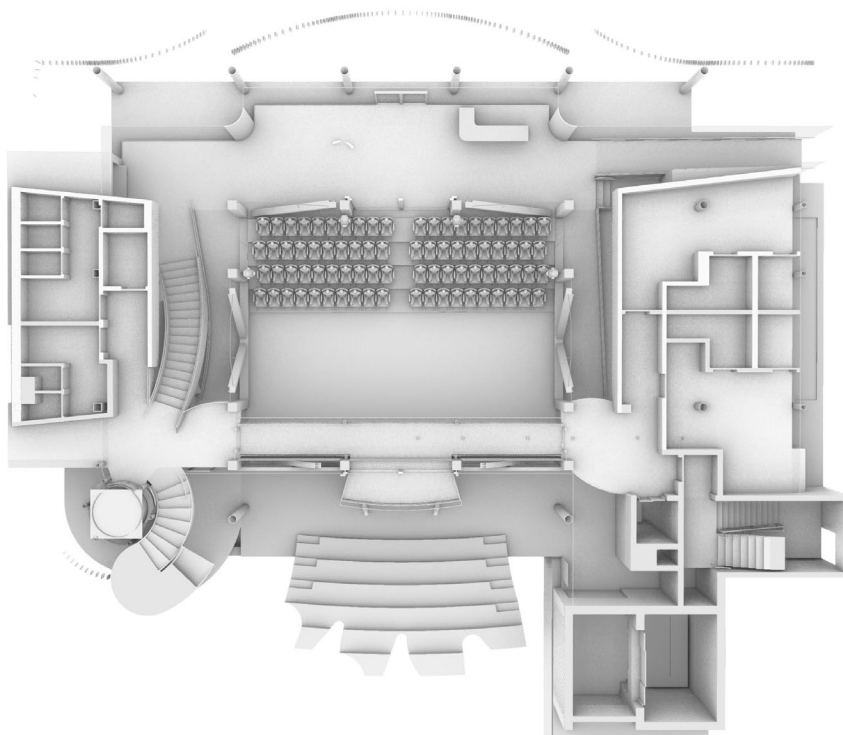
РЕПЕТИЦИЯ | PRIVATE REHEARSAL



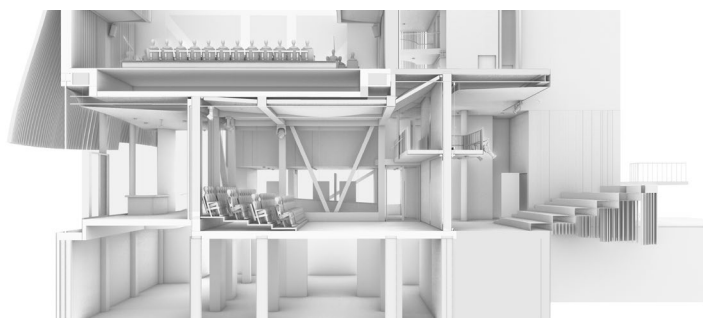
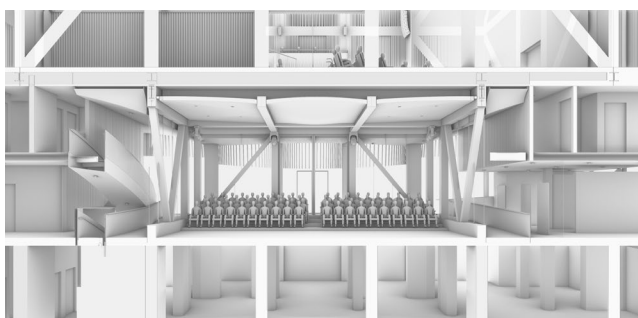
ПАРТЕР КОТА 0 | GROUND LEVEL 0



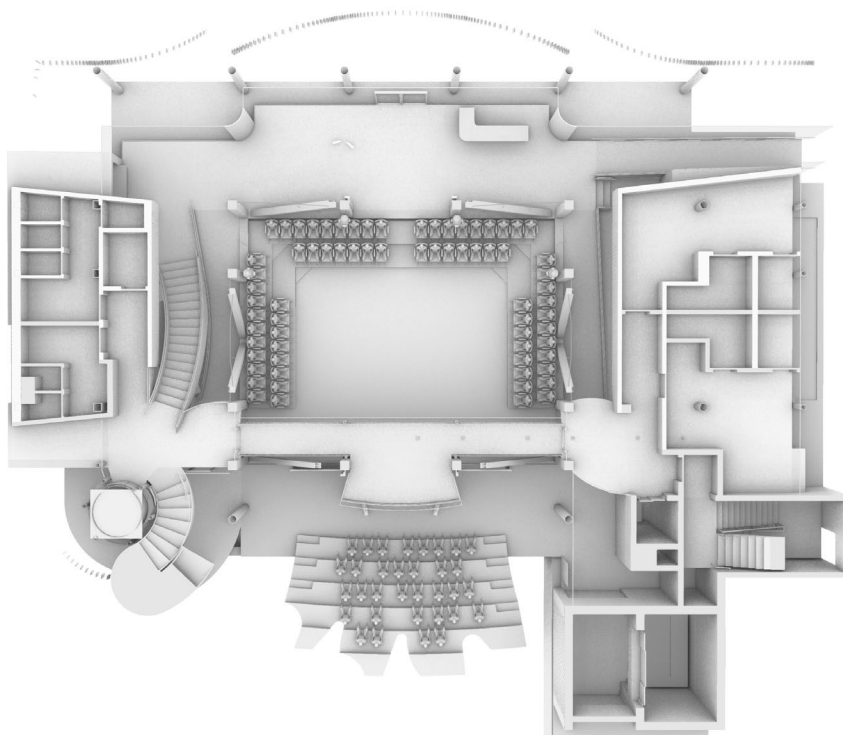
ЗАТВОРЕНО ПРЕДСТАВЛЕНИЕ | CLOSED INDOOR PERFORMANCE



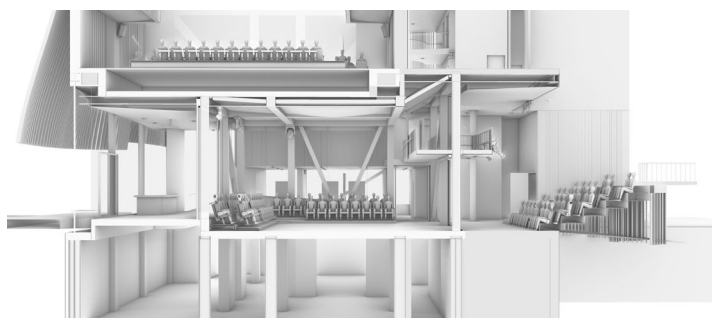
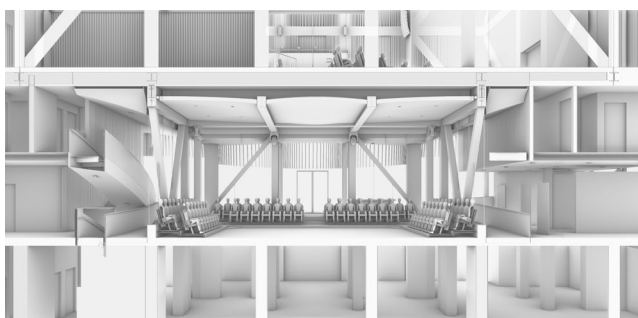
ПАРТЕР КОТА 0 | GROUND LEVEL 0



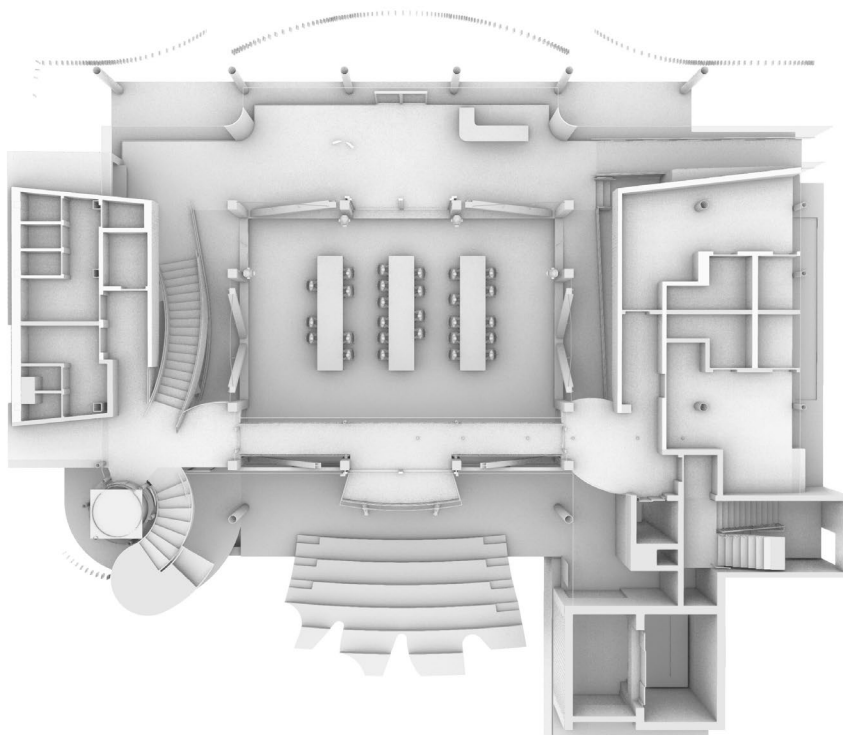
ОТВОРЕНО ПРЕДСТАВЛЕНИЕ | OPEN INDOOR PERFORMANCE



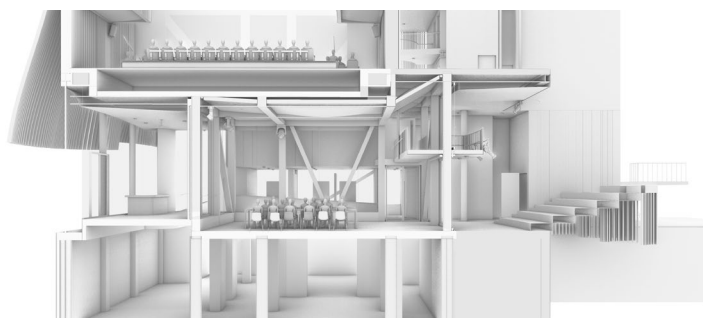
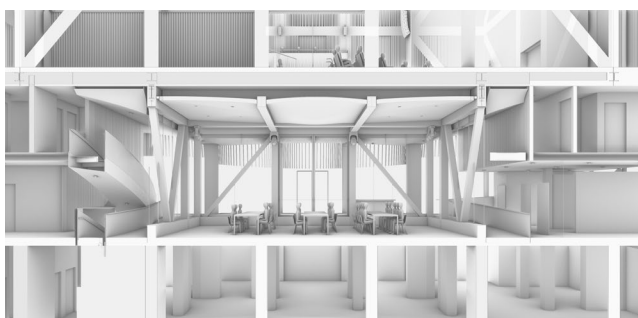
ПАРТЕР КОТА 0 | GROUND LEVEL 0



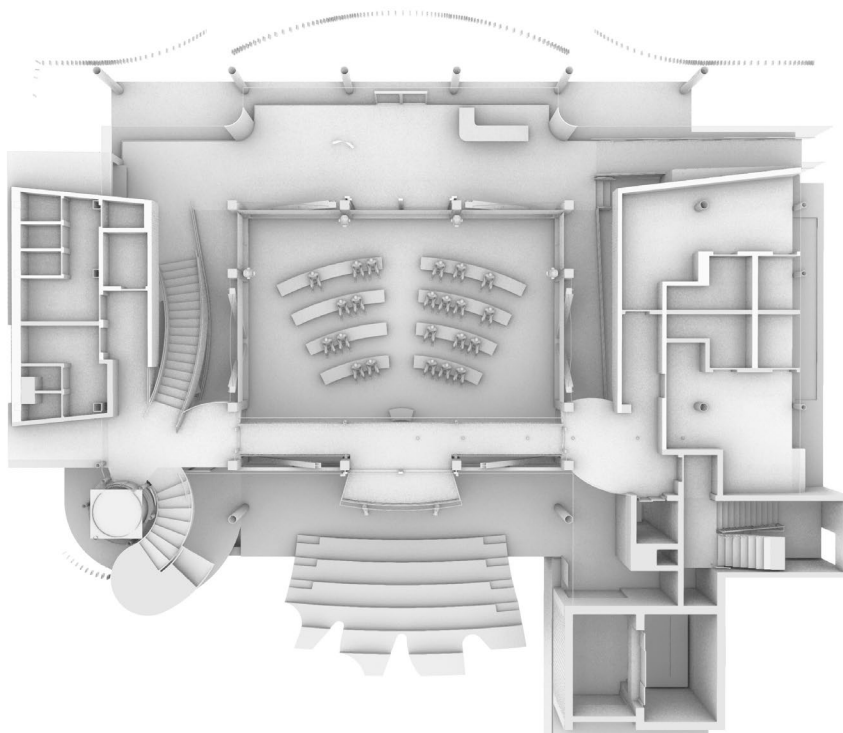
ПРЕДСТАВЛЕНИЕ НА ЗАКРИТО/ОТКРИТО | INDOOR/ OUTDOOR



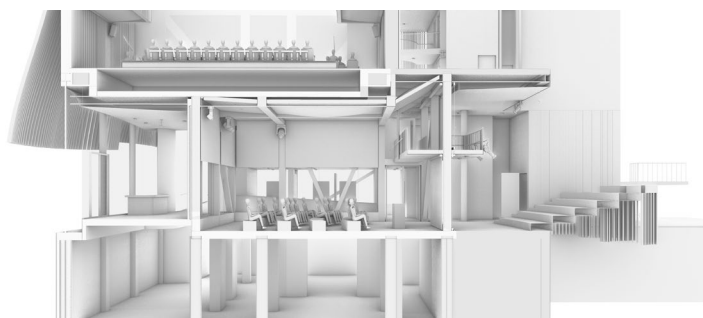
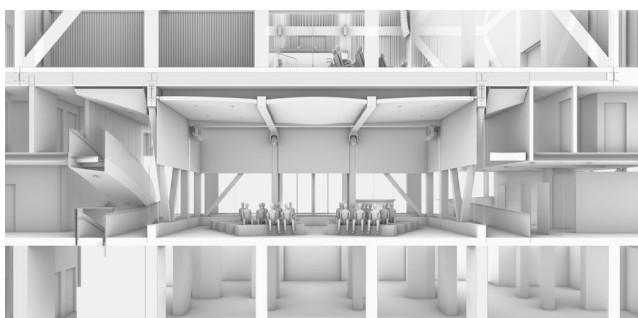
ΠΑΡΤΕΡ ΚΟΤΑ 0 | GROUND LEVEL 0



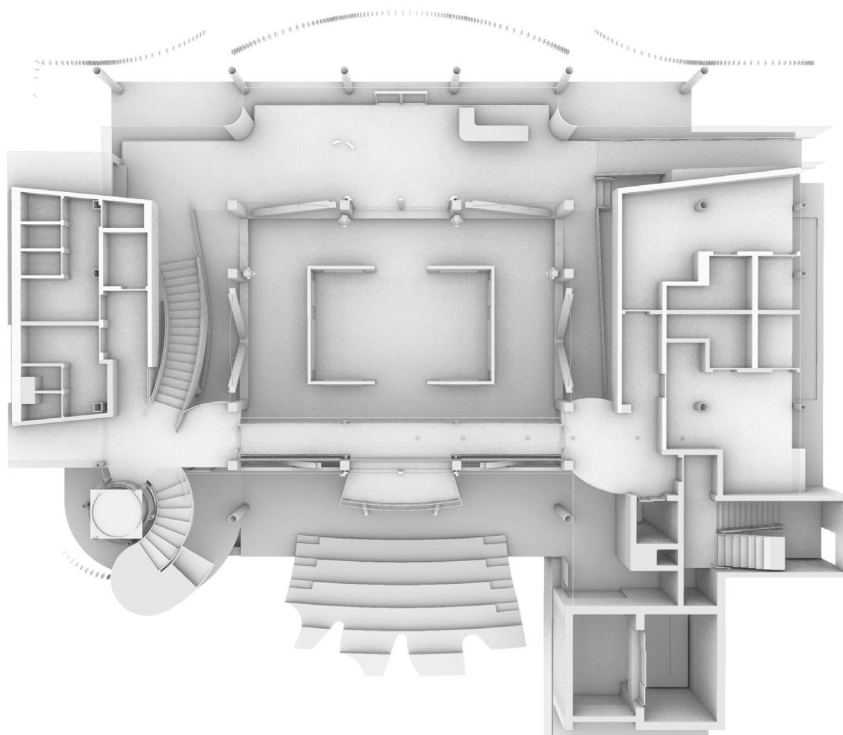
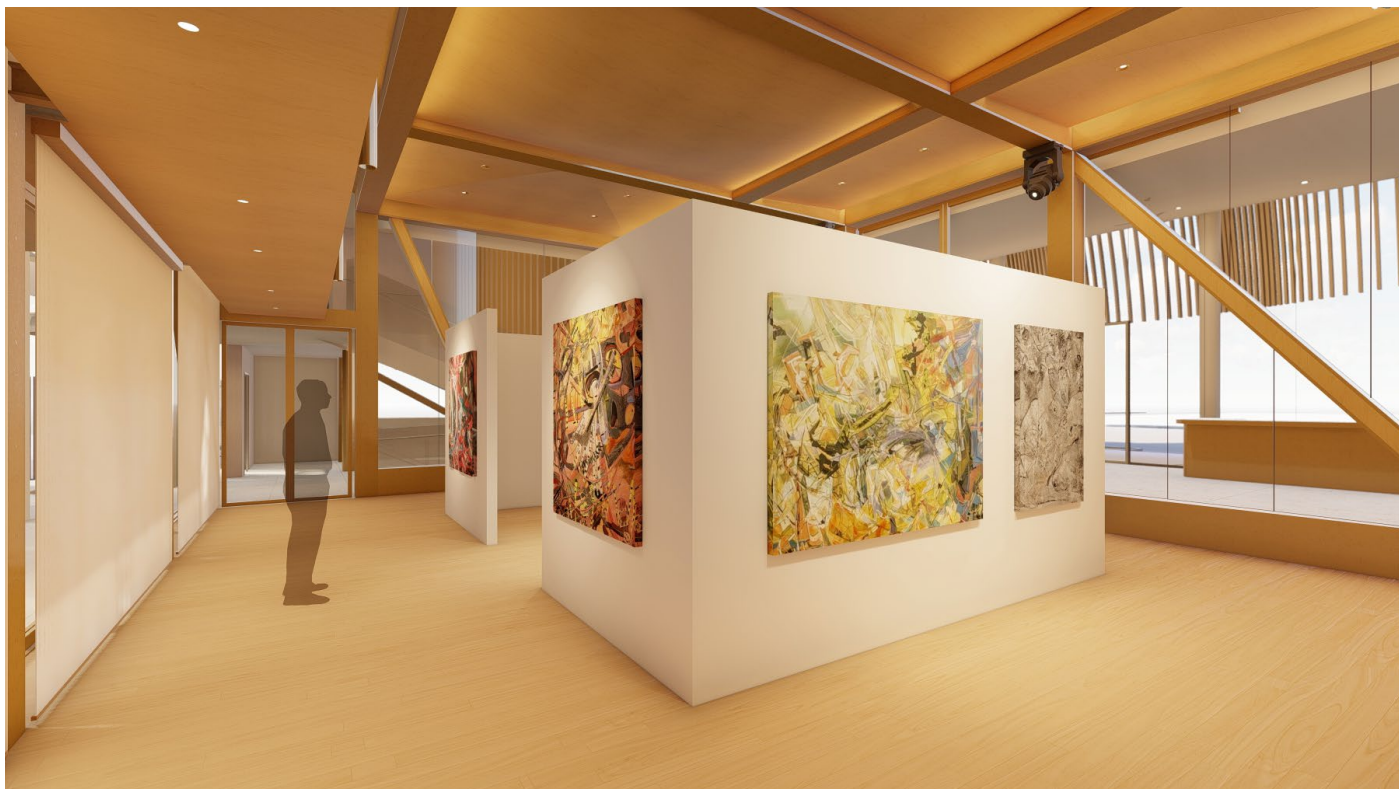
ΟΒΧΕΣΤΒΕΝΟ ΠΡΟΣΤΡΑΝΣΤΒΟ | COMMUNITY SPACE



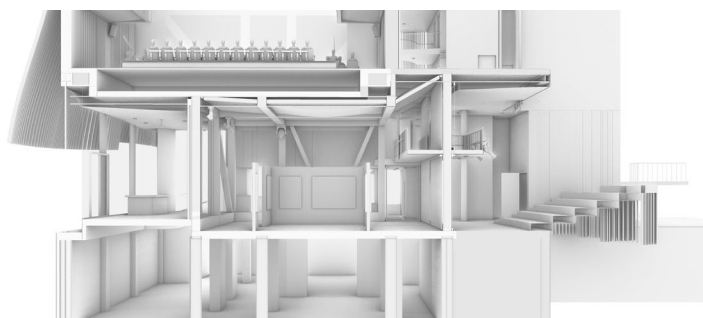
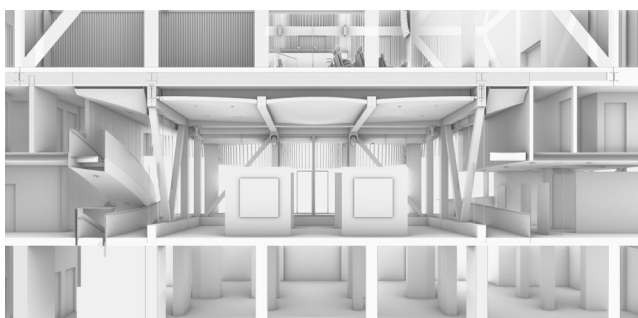
ПАРТЕР КОТА 0 | GROUND LEVEL 0



ЛЕКЦИЯ | LECTURE



ПАРТЕР КОТА 0 | GROUND LEVEL 0



ИЗЛОЖБА/ KUNSTHALLE | EXHIBITION/ KUNSTHALLE