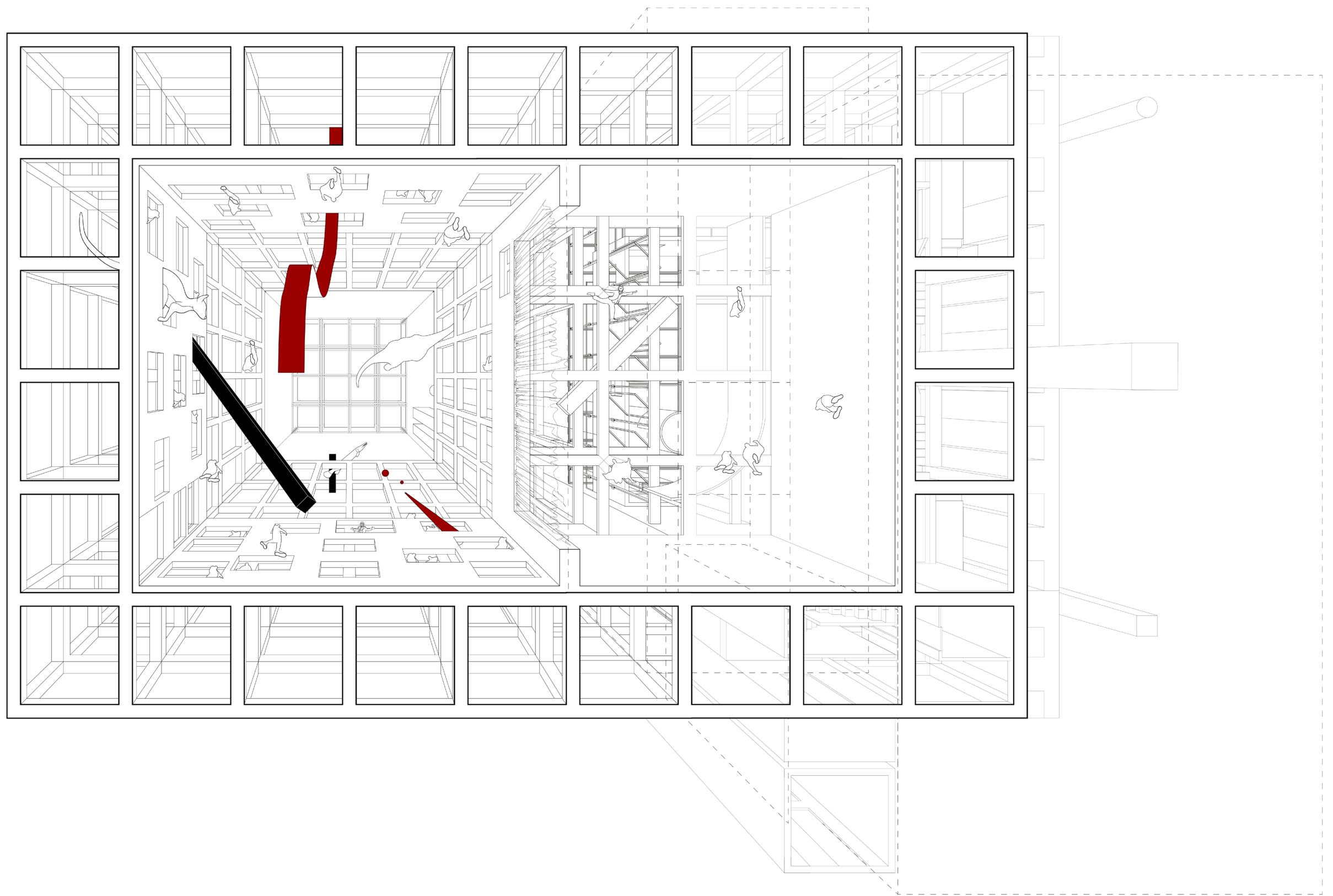


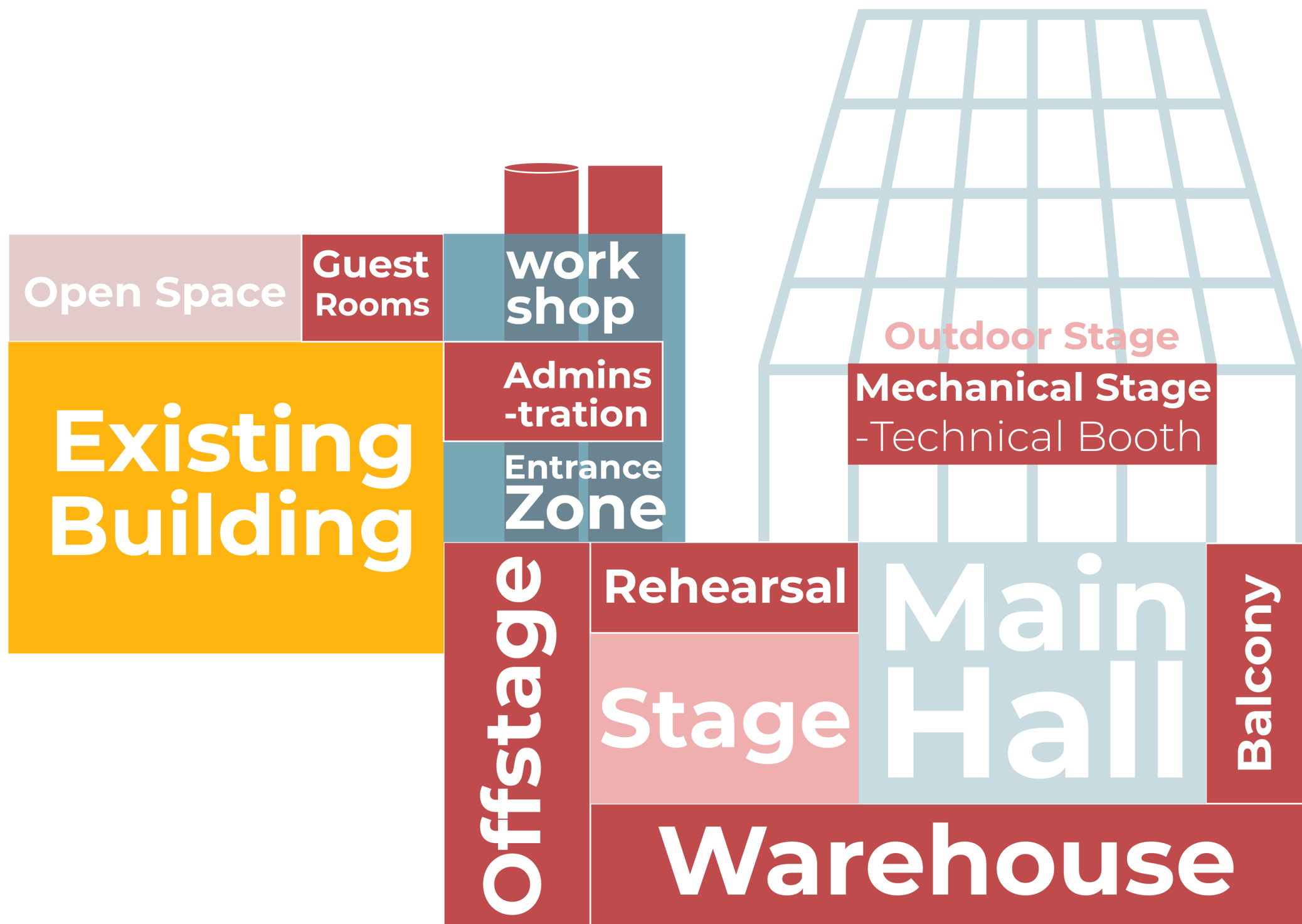
Additional Materials

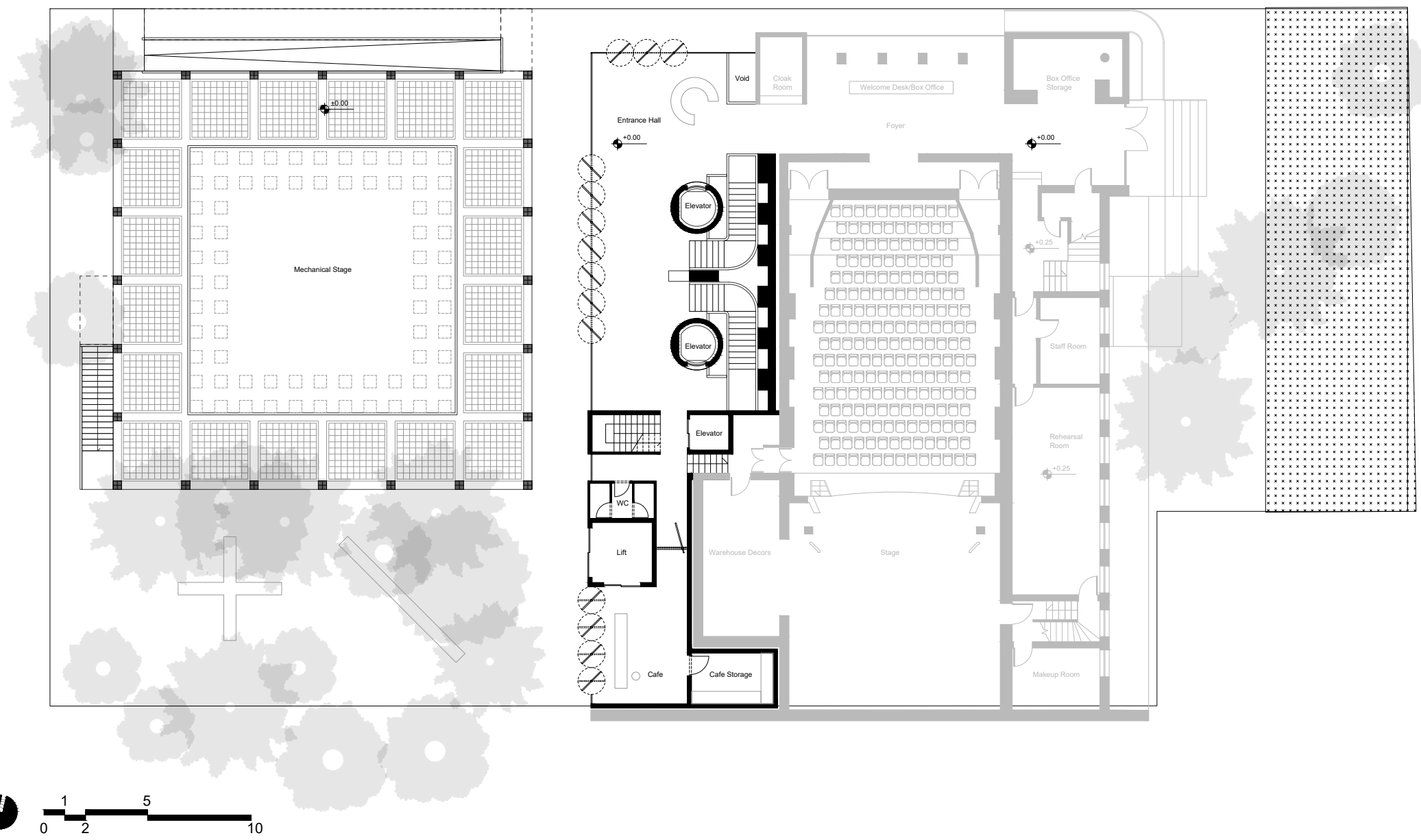
Red Hollow Creature

The new theater complex is a red and hollow shape inserted in the ground, with parts protruding from it and parts extending into the existing building. This creature is formed on a 3.30-meter grid and includes the following spaces: **Entrance Zone:** Located next to the existing building, the entrance zone acts as a transitional space between the existing theatre, the main hall and the yard. The ground floor of this volume is dedicated to the entrance space, its related services and main accesses. The upper floors include offices and residential uses. An access to the existing building is provided in each floor. **Main Hall:** The main hall is a large hollow space that goes from the basement to above ground level (-9.90 to +19.80). The boundary of this space is defined by a skeleton, left bare in above ground but covered by offstage spaces (as its flesh) in basement floors. A light red box is hung from reels on the upper corners of the skeleton, letting its height to be adjustable. As a result when the box is level with the ground, the main hall is completely enclosed and the ground level can be used as an open stage or urban platform during festivals and peak times. On the contrary, when the red box is suspended above the ground level, the ground level will remain empty, providing the main hall with the possibility to use the natural scenery, the view of the trees and the sky. The stage and audience area are located on hydraulic jacks, which allows the hall to be used both as a black box with a specific arrangement for each performance and as a classic stage arrangement. **Existing Building:** The entrance of the new building is merged with the one in the existing. Also, on the roof, the sloping ceiling has been removed and is used as an open space for artists' desired activities. Using one-point perspectives and visual errors, the design plays with viewer's perception of the depth of space.



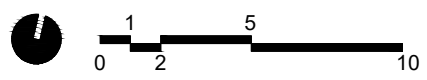
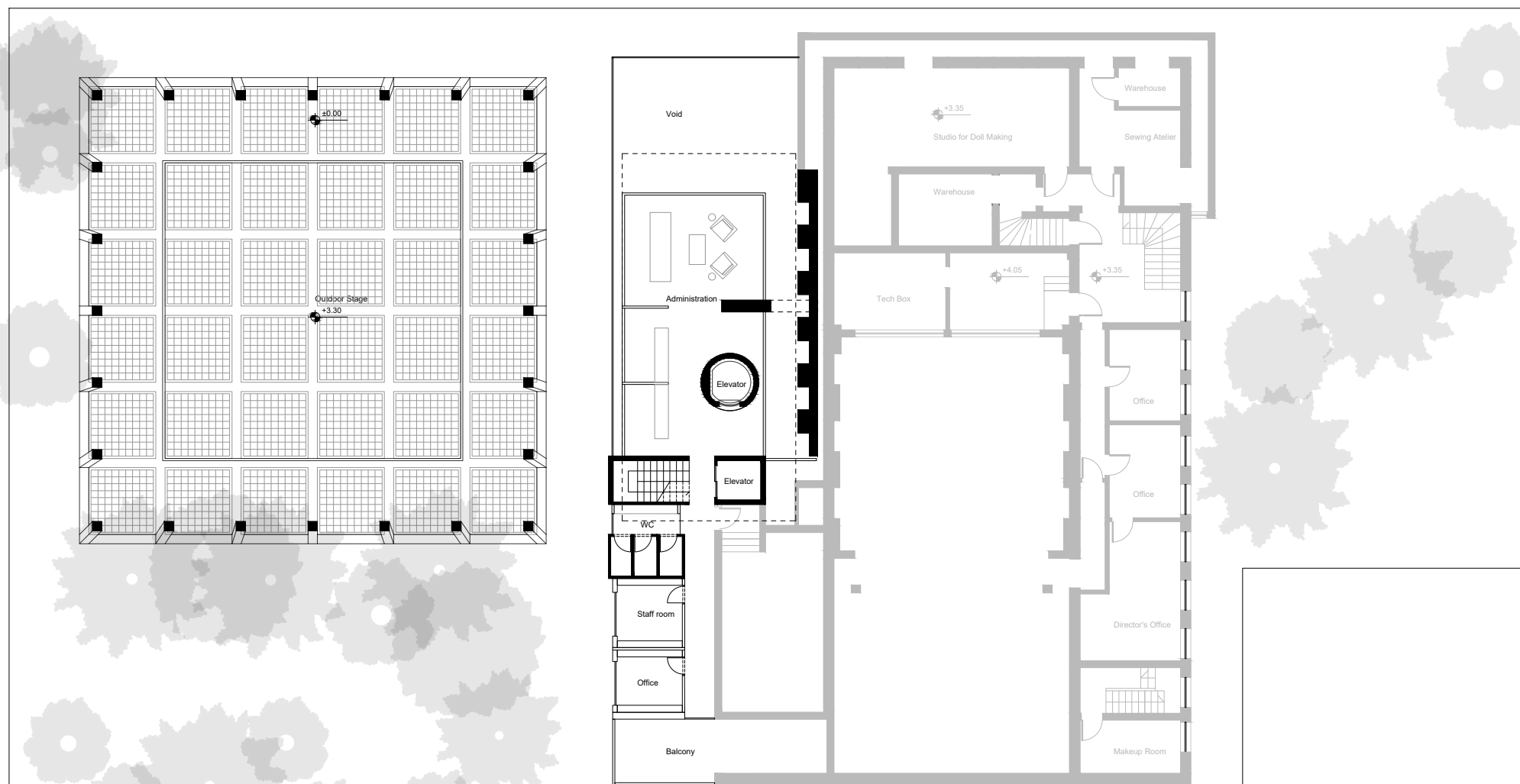
**One Point Perspective of the Hole and the Entrance Zone
(View from Bottom to Top)**



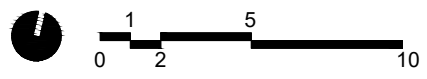
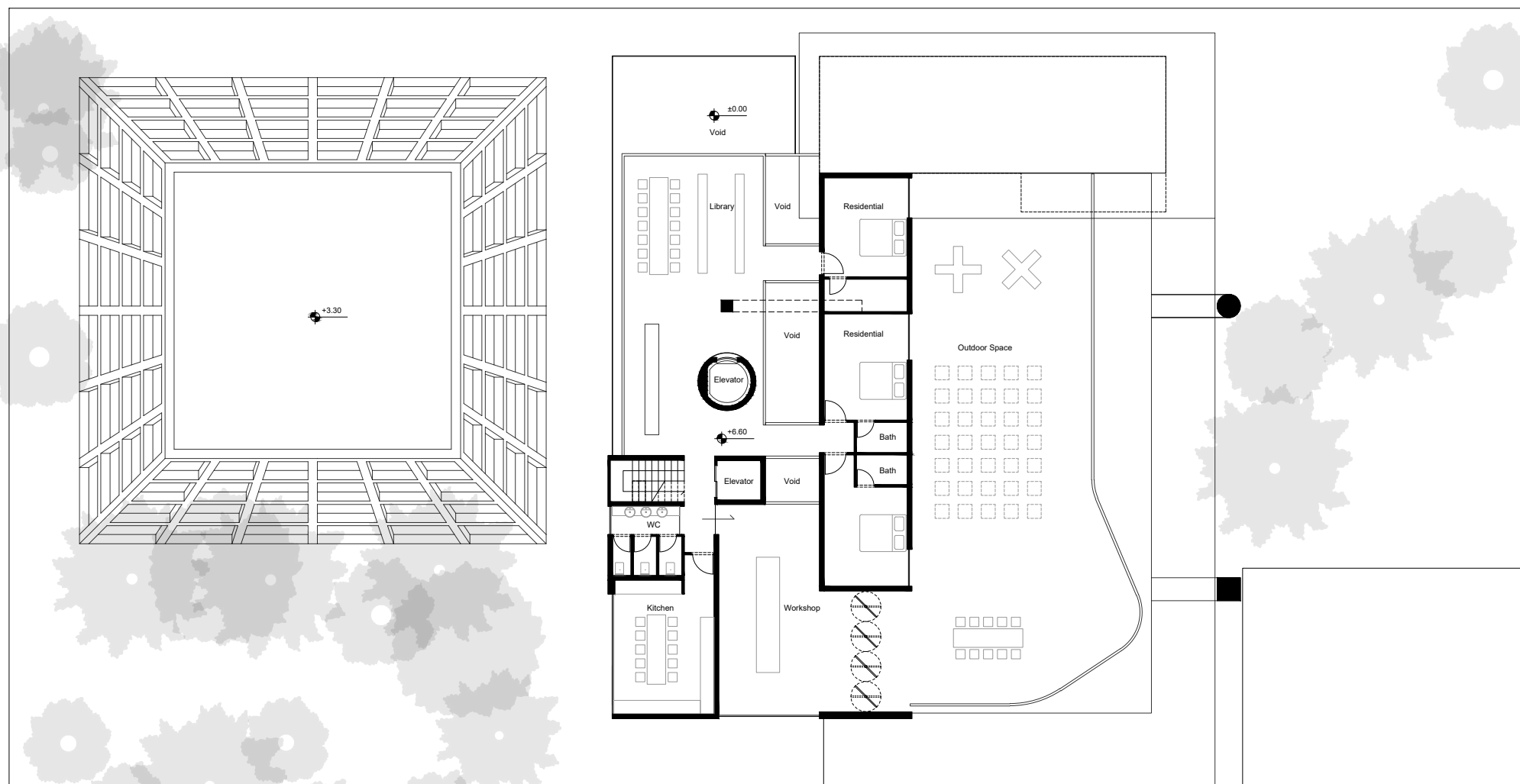


Car Park
Load & Unload Dock

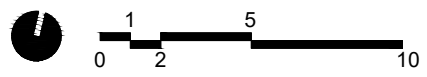
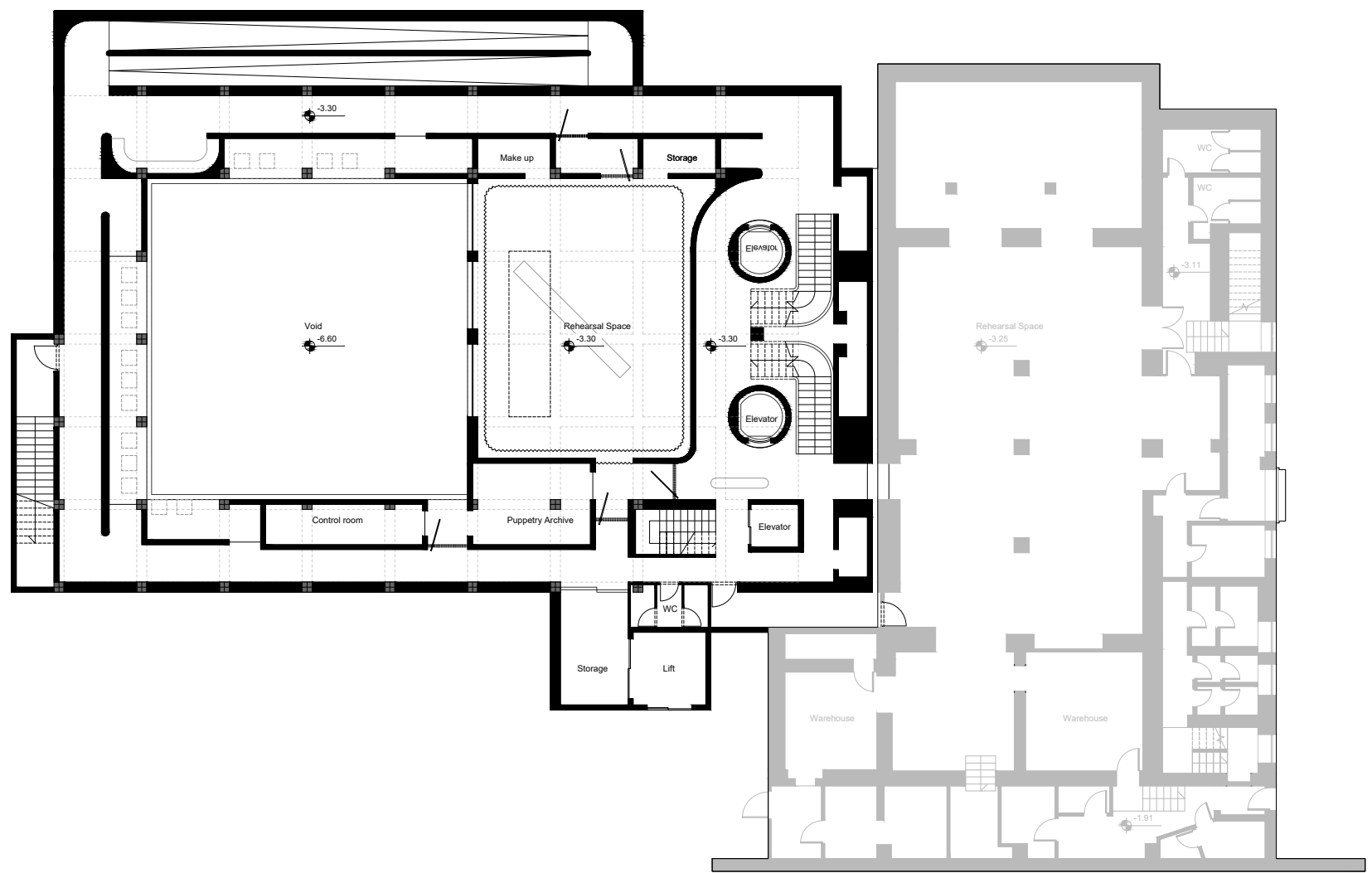
Ground Floor Plan



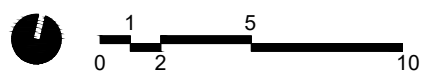
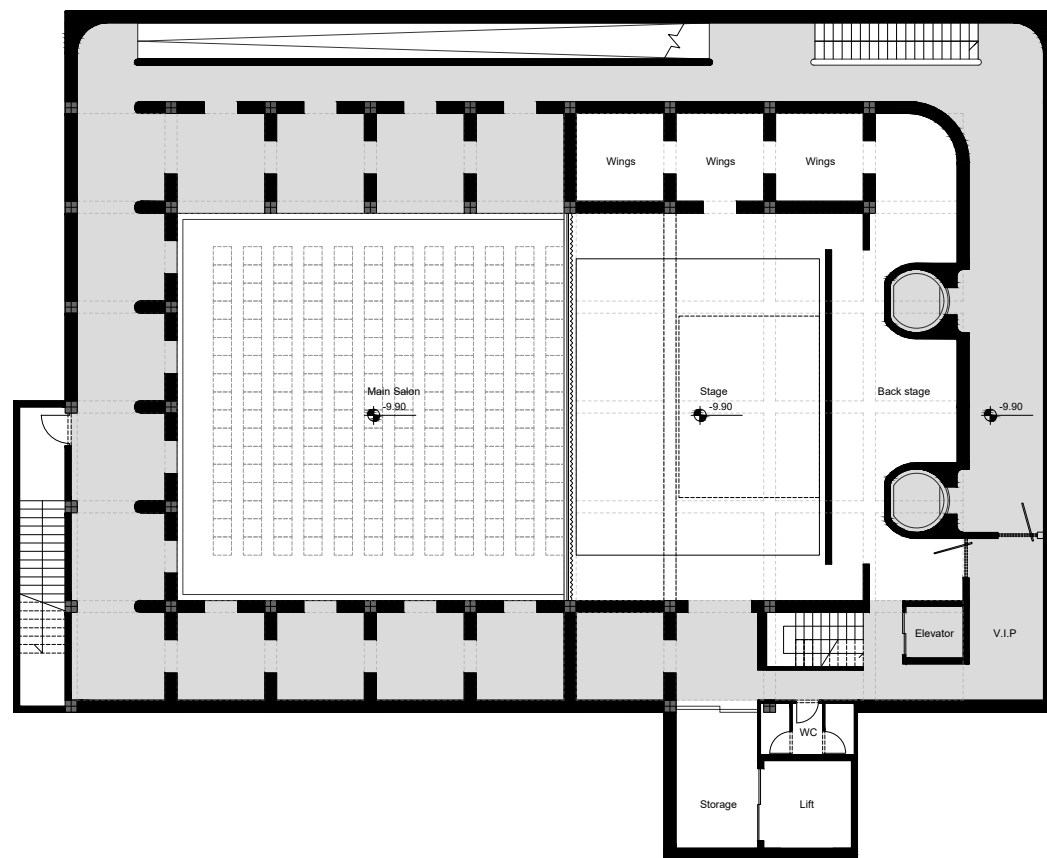
First Floor Plan

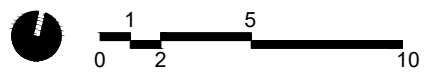
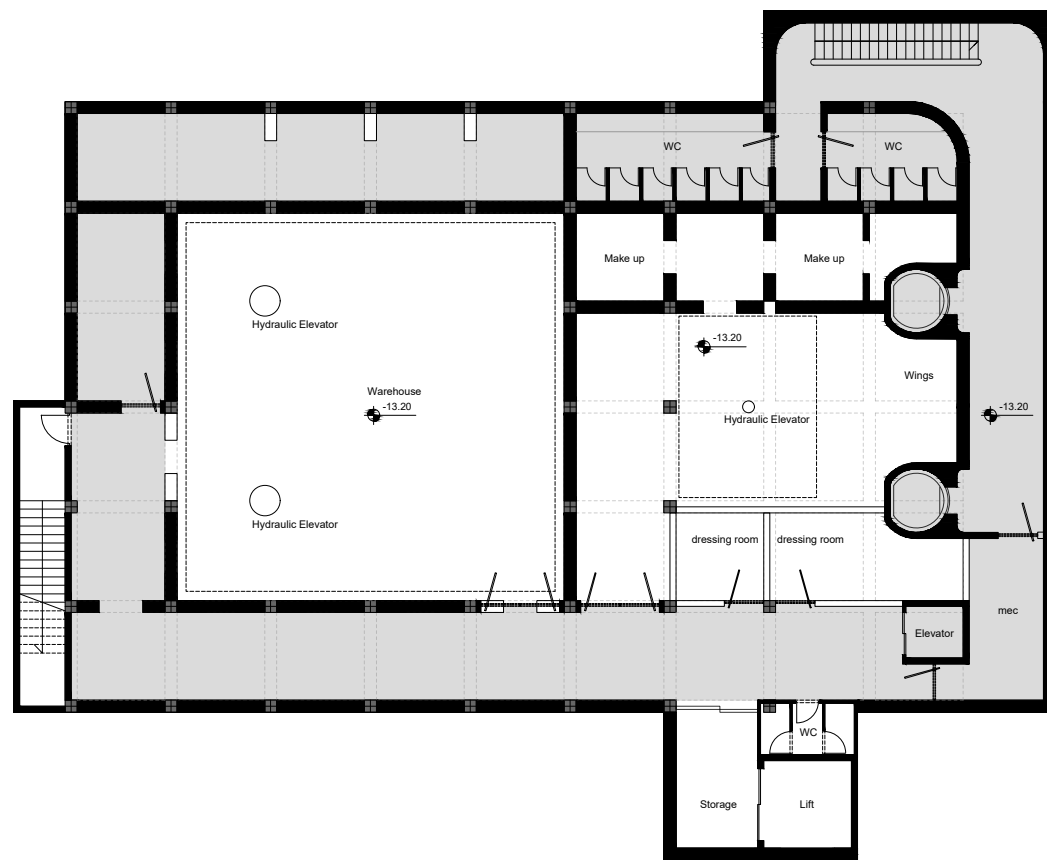


Second Floor Plan



First Basement Plan





Third Basement Plan

